

金米龙

GOLDEN  
CHAMELEON







# Master of Prime Decorative Panels

高定饰面大师

金品质，高颜值  
服务中国高端家庭







01 *Company Profile*  
公司简介

02 *Company Milestone*  
公司历程

05 *Sync with Global  
Aesthetic Trends*  
与全球美学同步

06 *Our Products*  
金米龙产品

03 *Global Suppliers*  
全球供应商

04 *Quality Assurance*  
品控管理

07 *Corporate Vision*  
企业愿景



# 01

## Company Profile

### 公司简介



## 2016 年

创立于江苏  
Founded In Jiangsu

## EU

欧洲进口生产线  
European Imported Production Line

## 4.0

工业化智能工厂  
Industrialized Smart Factory

## 从德国制造 到中国制造

Made In China  
With German Quality



金米龙，承袭了德国豪迈一贯以来的“品质优先”原则。

作为技术驱动型的饰面板材制造商，金米龙在江苏昆山设有生产基地，拥有亚洲领先的智能润色及表面处理生产线。核心设备以及耗材均进口自德国、意大利、西班牙等欧洲国家，具备世界顶尖的工艺水平。

金米龙专注于饰面板材的研发、生产与销售，产品包括丽晶板，臻木天然木皮饰面板、欧洲烤漆板、创意背板、EB 电子烤漆板等，致力于为客户提供门、墙、柜一体化解决方案，并凭借先进的数字化制造平台，精准实现客户的个性化定制需求，让中国消费者能够体验到与欧美市场同等的卓越产品和服务。

坚持环保产品与可持续发展，金米龙始终积极引领行业绿色转型，使家居空间不但拥有美学价值，更具备安全性与舒适性。展望未来，金米龙的企业愿景是成为饰面板领域内备受尊敬的“中国制造”品牌。

Golden Chameleon inherits the principle "Quality First" of German company HOMAG.

As a technology-driven decorative panel manufacturer, Golden Chameleon has a production base in Jiangsu, China, equipped with Asia's leading intelligent paint coating and surface treatment production lines. Its core equipment and consumables are imported from European countries such as Germany, Italy, and Spain, ensuring world-class manufacturing technique.

Golden Chameleon offers high quality decorative panels, including fireproof crystal stone board, natural veneer panel, soft touch panel, digital print board, EB coating panel, etc. It is committed to provide customers with décor and material combination for continuous space: furniture, interior panel, flooring.

Living well, live in style, Golden Chameleon has always actively led the green movement of the industry, making spaces not only aesthetically valuable but also safe and comfortable.



# 02

## Company Milestone

### 公司历程

## 2016

作为亚洲首家，在山东青岛引进欧洲全自动数码打印及表面处理生产线。

Imported the Asia's 1<sup>st</sup> European fully automatic production line of digital printing and surface treatment in Qingdao, Shandong.

## 2018

成立以江苏昆山为总部的集团运营及研发中心，开发板材数码打印技术与表面处理工艺。

Establishment of the HQ and R&D center base in Jiangsu, to develop digital printing technology and surface treatment processes for decoctive panels.

## 2020

经过近四年的技术研发工艺沉淀正式推出欧洲烤漆板。

Launched the 4H Soft Touch series, after nearly 4 years of R&D.

## 2021

天然木皮与纳米固化技术结合，臻木半透木饰面系列上市。

Combination of natural wood veneer and nano-curing technology, semi-transparent wood veneer series was launched.

## 2024

A1 级防火新品丽晶板问世，门墙柜一体化新突破。

Grade A1 fireproof board was introduced, breakthrough in the integration of interior surface.





# 03

## Global Suppliers

全球供应商



用全世界最顶尖的设备  
服务中国家庭，坚持欧  
洲标准和工艺，将德国  
品质带到中国

Serving global families with the world's best  
equipment, adhering to European standards and  
processes, 100% German quality.





-20~40℃

漆面耐冷热环境  
Temperature Tolerance Range of Paint

1 级漆膜  
Grade of Paint Film

附着力漆面不易开裂脱落  
High Strength

4H 硬度  
Hardness

漆膜硬度更高更平整  
Suitable For High-Wear Areas

TB BARBERÁN



## 卓越的漆面物理性能

Excellent Paint  
Physical Properties

- 惰性烤漆技术，顶尖工艺
- 性能出色，高强度、耐磨、表面耐腐蚀，抗污
- 通过欧洲 TUV 认证，品质可靠
- 无异味，对人体更健康，环保性好

— 西班牙巴贝兰纳米级油漆系统  
- Spanish Barberan Nano-level Paint System

- Inert paint technology, extremely smooth and uniform
- Wear & scratch resistance, corrosion resistance
- European TUV certification
- No odor, human health protection





1200 DPI

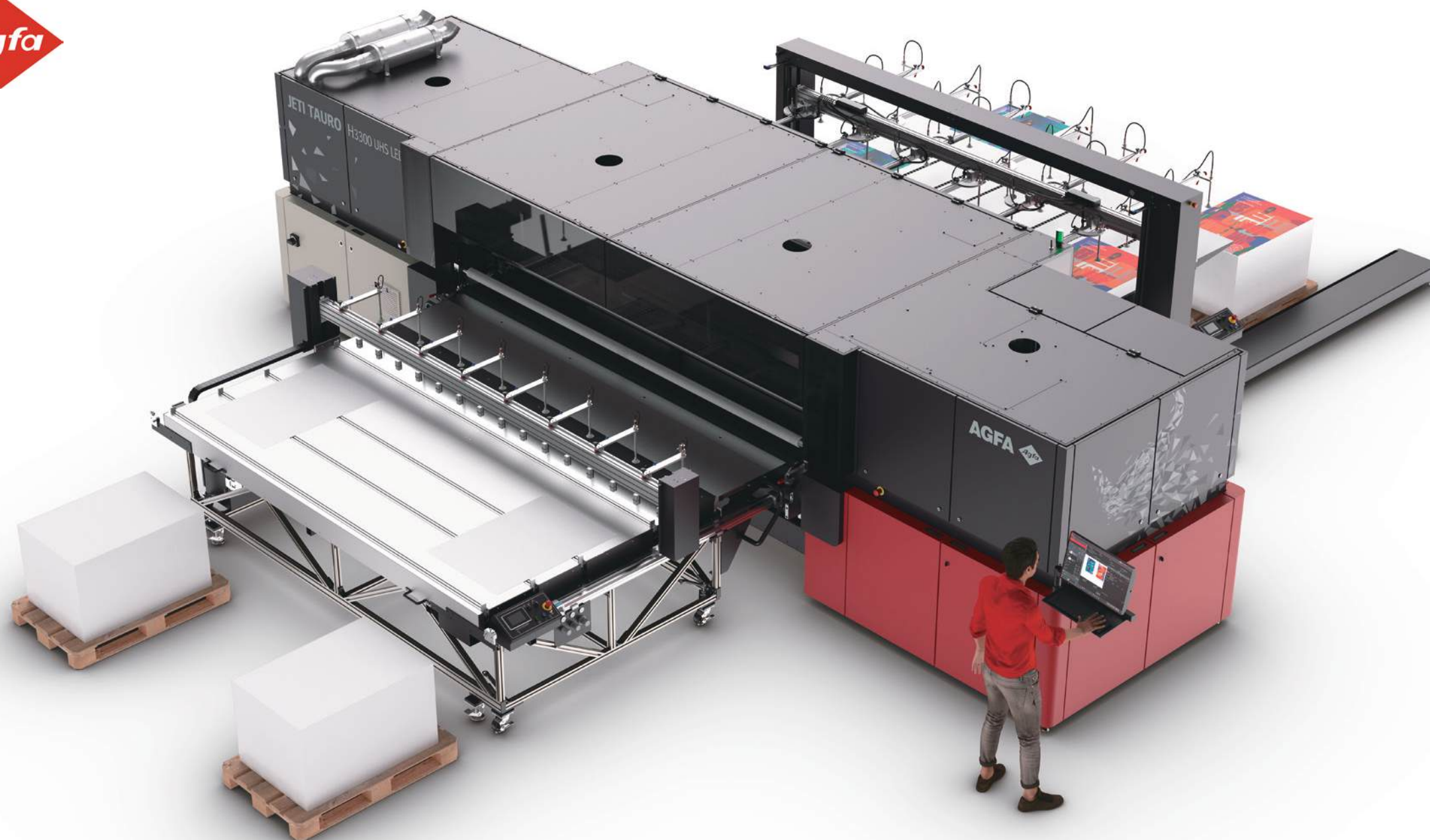
打印精度  
Print Resolution

6 色  
CMYK+2

打印  
Digital Printing

4 倍精度  
Times Clarity

同比国内 UV 打印机  
Compare to normal UV printer



## 无与伦比的 生动色彩与图像精度 Vivid Color, High Image Resolution

— 比利时爱克发打印机  
- Agfa Printer Belgium

- 打印精度高达 1200DPI，是普通印刷品的 4 倍，面板纹理细腻，栩栩如生。
- 广色域及高精度颜色系统，CMYK+2 6 色打印，色彩精准。
- 动态真空吸气控制 – 保证喷印落点位置精准，图像锐利。
- 更健康的墨水 – 获德国 AgBB, 法国 A+, 美国 UL Greenguard, 欧盟 REACH 保护人体健康和环境认证



- The printing resolution is up to 1200DPI, which is 4 times that of ordinary printed products.
- Wide color gamut and high-precision color system, CMYK+2 6-color printing.
- Dynamic vacuum suction control to ensure accurate placement of the ink, improve image sharpness and clarity.
- Eco ink, it is certified by German AgBB, French A+, American UL Greenguard, and EU REACH.





0 瑕疵  
Flaw

无尘工艺杜绝杂点  
Dust-Free Process Eliminates

1 : 1

真实同步纹理  
3d Texture

3 倍  
Times

压贴平整度  
Lamination flatness

## 德国 温康纳双板压贴线

Germany Wemhoner  
Double Sided Pressing Line

- 双层多单元循环油路，压板温度分布均匀。
- 压板应变补偿及油缸平衡系统，施压区域压力一致。
- 辅助时间段、加压时间快，贴面周期短（24 秒）
- Dual-layer multi-unit circular oil circuit ensures uniform temperature distribution across the platen.
- The platen strain compensation and cylinder balancing system guarantee consistent pressure in the pressing area.
- Fast and efficient (24 seconds per cycle)







## 德国 赫斯曼砂光机

### German Heesemann Sanding Machine

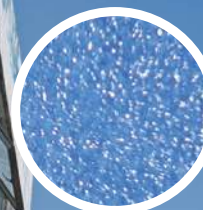
- 设备防震性能好，特有 Polo-V 设计加持，砂光一致性强。
- 砂光精细度高，面板表面光洁细腻。
- 高效的砂带清洗，确保砂带始终处于最佳工作状态，砂光稳定性好。
- 从重砂到细砂一台设备完成。

- Vibration-proof, Polo-V design for high sanding consistency.
- Perfect sanding surface finishes.
- Highly efficient and stable.
- From heavy to fine sanding in one machine.



**AIR  
PRODUCTS**

200 倍显微镜下：  
Paint under 200x microscope:



金米龙肤感板  
Our product



传统 UV 肤感板  
UV Paint Product

99.99%  
液氮隔氧

Pure Nitrogen Filling  
and Oxygen Isolation

- 172 纳米固化，准分子消光
- 1-2°超哑表面
- 耐污耐刮擦
- 久用不会产生亮光
- 母婴级净味环标准
- Nano-level curing, 99.99% pure nitrogen filling and oxygen isolation.
- 1-2° ultra-matte finish
- Stain and scratch resistant
- Long life matt finish
- Odor-free, health stand suitable for babies and pregnant woman



# 04

## Quality Assurance

### 品控管理

金品质，高颜值，是金米龙的品牌标准，也是我们对客户的承诺。我们精心构建了严密的品质控制管理体系，涵盖从精选原料到精细色彩管理的每一个环节，确保每一块板材都能达到“德国制造”的严苛标准，完美无瑕地呈现在客户面前。

Prime quality and aesthetic product is our commitment to customers. We have meticulously established a rigorous quality control system covering every aspect from carefully selected raw materials to precise color management, to ensure that every panel meets the stringent standards of 'Made in Germany'.



### 分拣控制系统

Sorting Control System

- 30% 选取率：金米龙实木皮选用标准
- 3 次分检：从源头控制色差
- 45 丝厚度：确保更生动的纹理
- 30% Selection rate: we choose flawless wood veneer only
- 3 Times inspection: reduce the color difference.
- 0.45mm thickness: more realistic texture.



### 数字化色彩管理

Digital Color Management

- 色彩相似度 90% 以上，德国数字化色彩管理系统，批次间色差少
- 6 色（CMYK+2）润色技术，色域更广，色彩更饱满
- 5 步法色彩处理工艺：挑色、选色、修色、润色、固色
- Color similarity of more than 90% between batches, german digital Color management system
- 6-Color (CMKY+2) printing, wider color gamut
- 5-Step color treatment process, ensure high color accuracy.

### 恒温恒湿仓储管理

Temperature and Humidity Controlled Warehouse Management

- 室温 25°C，湿度 50%
- 连续存放 120 小时，确保板材的各项物理性能稳定
- 不易发生形变，耐用性更佳
- Room temperature 25° c, humidity 50%
- 120 Hours stabilization after production
- Reduce deformation chance, better durability.



### 资深研发 & 品质工程师

R&D & Quality Engineer

- 从原料到成品，层层质检把关
- 可视化全自动电脑检测技术
- 人工复检，进一步精细化检测
- 出厂品检，确保交付客户满意
- Quality control from raw material to finished product.
- Fully automated computerized & visual inspection technology
- Manual re-inspection for further refinement
- QC before delivery







05

## Sync with Global Aesthetic Trend

与全球家装美学同步

唯有亲历山川，方能领悟其巍峨之姿；  
唯有遍历世界，才可洞悉其壮阔之貌。

植根于德国制造精髓的金米龙，其精湛不仅限于工艺，更在于对欧洲设计美学的深刻领悟与娴熟运用，融入国人的家居生活之中。

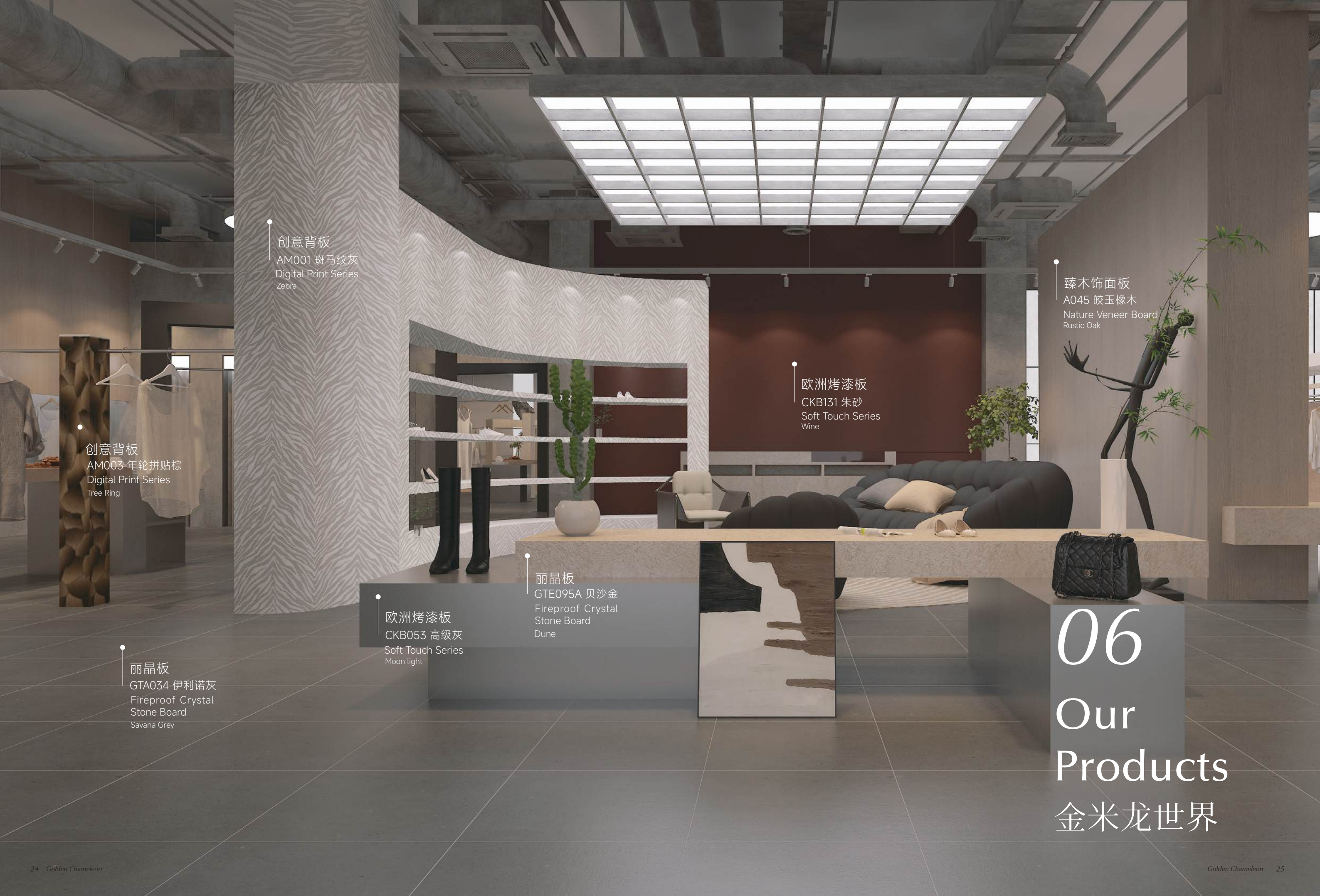
金米龙产品设计中心：  
紧跟国际家居时尚潮流，整合意大利、德国、中国领先设计师团队提供深度产品定制服务。

Only by personally experiencing the mountains and rivers can one appreciate their majestic grandeur; only by traveling the world can one discern its magnificent scenery.

Rooted in the essence of German manufacturing, Golden Chameleon's expertise is not limited to craftsmanship but also lies in its profound understanding and skillful application of design aesthetics, seamlessly integrating them into human life.

Golden Chameleon Product Design Center:  
Staying ahead of international home fashion trends, our global designer team are from Italy, Germany and China.  
Providing whole product customization services





创意背板  
AM001 斑马纹灰  
Digital Print Series  
Zebra

创意背板  
AM003 年轮拼贴棕  
Digital Print Series  
Tree Ring

丽晶板  
GTA034 伊利诺灰  
Fireproof Crystal  
Stone Board  
Savana Grey

欧洲烤漆板  
CKB053 高级灰  
Soft Touch Series  
Moon light

丽晶板  
GTE095A 贝沙金  
Fireproof Crystal  
Stone Board  
Dune

欧洲烤漆板  
CKB131 朱砂  
Soft Touch Series  
Wine

臻木饰面板  
A045 皎玉橡木  
Nature Veneer Board  
Rustic Oak

# 06 Our Products 金米龙世界



# 0.45<sub>MM</sub>

进口天然木皮  
Imported Nature Veneer

# 172<sub>NM</sub>

Kleiberit 油漆固化  
Paint Curing

## 臻木系列 Nature Veneer Board

选用 45 丝的进口天然木皮，通过德国工业级润色系统，精准 控制批次色差，不使用传统化学脱色染色工序，保证绿色安全。

橡木，胡桃，榆木，尤加利 4 种主流木种，在保留原木的真实立体纹理外，提供更高的硬度，细腻触感。使用德国半透明油漆，经由 172 纳米固化，色泽更持久稳定。

Nature Veneer Board series uses 0.45mm imported natural veneer, and uses the German industrial-grade polishing system to accurately control batch color difference. It does not use traditional chemical decolorization and dyeing processes to ensure green safety.

Oak, walnut, elm, eucalyptus 4 wood species, in addition to retaining the true 3D texture of the original wood, provide better hardness and delicate touch. Our Verntrue Tech and German translucent paint, ensure the color is durable and stable.

Verntrue Tech



# 臻木系列

Nature Veneer Board

Verntrue Tech



Nano-Excimer Semi-Transparent  
Skin-Feeling Layer  
纳米准分子半透肤感层

Top-Grade Polishing And Color-Fixing  
Functional Layer  
顶级润色固色功能层

Selected Natural  
AAA-Grade Veneer  
精选天然 3A 级木皮

Environmentally Friendly High-Quality  
Substrate  
环保高品质基材

Selected Natural  
AAA-Grade Veneer  
精选天然 3A 级木皮

Top-Grade Polishing And Color-Fixing  
Functional Layer  
顶级润色固色功能层

Nano-Excimer Semi-Transparent  
Skin-Feeling Layer  
纳米准分子半透肤感层



3A级木皮

AAA Veneer

30% 选取率  
3 次分检  
45 丝天然木皮

30% selection rate  
3 times inspection  
0.45mm thickness natural veneer



温润触感

Soft Touch

肌肤触感  
细腻温润

Baby skin touch feel  
Delicate and smooth



德国色彩  
管理系统

Color Management  
System

5 步法定色  
批次间更少色差

5-step color matching  
less color difference  
between batches



高硬度

High Strength

日常使用  
不易留痕

More durable  
for daily use



超强紫外线  
照射不变色

Color Fastness

SGS 实验认证  
超强色牢度

SGS test certification  
7\*24 hours ultra-strong  
ultraviolet rays  
irradiation test does not  
change color



自然纹理

Wood Texture

实木木皮  
绝佳美感

100% nature wood texture



环保等级

F4 Star Grade

更严苛的甲醛  
VOC 释放标准

An average  
formaldehyde  
emission limit not  
exceeding 0.3 mg/L



抗指纹

Anti-Fingerprint

人体油脂不残留  
持久如新

Look fresh and new everyday  
Easy to clean





A001 烟熏胡桃  
Nature Veneer Board  
Smoked Walnut

Specifications:  
MDF/Particle board  
1220\*2745\*9mm  
1220\*2745\*18mm  
1220\*2745\*22mm

Crystal stone board  
1220\*2440\*6mm  
1220\*2440\*8mm

Applications:  
Door  
Wall  
Cabinet





A004 昆布榆木  
Nature Veneer Board  
Coastal Grey Elm

Specifications:  
MDF/Particle board  
1220\*2745\*9mm  
1220\*2745\*18mm  
1220\*2745\*22mm

Crystal stone board  
1220\*2440\*6mm  
1220\*2440\*8mm

Applications:  
Door  
Wall  
Cabinet





C073 云峰白橡  
Nature Veneer Board  
Light White Oak



CKB 105 浅灰  
Soft Touch Board  
Light Grey

Specifications:  
MDF/Particle board  
1220\*2745\*9mm  
1220\*2745\*18mm  
1220\*2745\*22mm

Crystal stone board  
1220\*2440\*6mm  
1220\*2440\*8mm

Applications:  
Door  
Wall  
Cabinet







A045 皎玉橡木  
Nature Veneer Board  
Rustic Oak

Specifications:  
MDF/Particle board  
1220\*2745\*9mm  
1220\*2745\*18mm  
1220\*2745\*22mm

Crystal stone board  
1220\*2440\*6mm  
1220\*2440\*8mm

Applications:  
Door  
Wall  
Cabinet





C043 烟色胡桃  
Nature Veneer Board  
Maple Walnut

Specifications:  
MDF/Particle board  
1220\*2745\*9mm  
1220\*2745\*18mm  
1220\*2745\*22mm

Crystal stone board  
1220\*2440\*6mm  
1220\*2440\*8mm

Applications:  
Door  
Wall  
Cabinet



# 4H

硬度  
Hardness

# SGS

认证  
Test Certification

强紫外线光照照射不变色

7X24 Hours Ultra-Strong Ultraviolet Rays  
Irradiation Test Does Not Change Color

**ExcimerTech**

## 欧洲烤漆系列

Soft Touch Board

欧洲烤漆饰面拥有婴儿般肌肤触感，对于日常污渍能轻易擦除，清洁维护方便。该系列提供多达数十种流行色，百搭易用。

172nm 纳米射线，充氮固化，分子重组物理消光，打造出 4H 超高硬度漆面。无惧日常磕碰刮擦，并且耐黄变性能极佳，通过 SGS 实验室 7x24 小时紫外线照射测试不变色。

Golden Chameleon Soft Touch Board finish has a skin-like soft touch, for stains can be easily wiped, easy to clean and maintain. The series offers dozens of popular colors, easy to use.

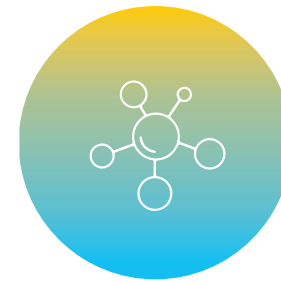
172nm nano ray, nitrogen curing, molecular restructuring physical matting, to create a 4H ultra- high hardness lacquer, fearless of daily bumps and scratches; and excellent resistance to yellowing performance, no aldehyde and tasteless, babies and pregnant women can also be safe to use.



# 欧洲 烤漆

Soft Touch Board

**ExcimerTech**



## 纳米固化科技

172NM

2° 超哑  
充氮隔氧固化  
分子重组物理消光  
真正准分子肤感

2° super matt finish  
Nitrogen-filled and oxygen-isolated  
curing  
Molecular reorganization and  
physical extinction  
True quasi-molecular skin feel



## 温润触感

Soft Touch

肌肤触感  
细腻温润

Baby skin touch feel:  
delicate and smooth

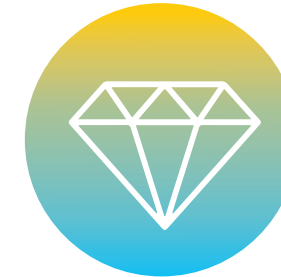


## 耐刮耐划

Scratch Resistant

表面坚固耐用  
耐刮耐划不留痕

Durable, resistant  
to scratches and scuffs

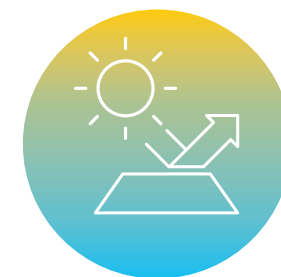


## 高硬度

High Hardness

硬度更高  
不易留痕

Excellent hardness,  
impact-resistant



## 超强紫外线 照射不变色

Color Fastness

SGS 实验认证  
7\*24 小时超强紫外线  
照射测试不变色

SGS test certification  
7\*24 hours ultra-strong  
ultraviolet rays  
irradiation test does not  
change color



## 抗指纹

Anti-Fingerprint

人体油脂不残留  
持久如新

Look fresh and new everyday  
Easy to clean



## 环保等级

F4 Star Grade

更严苛的甲醛  
VOC 释放标准

An average  
formaldehyde  
emission limit not  
exceeding 0.3 mg/L

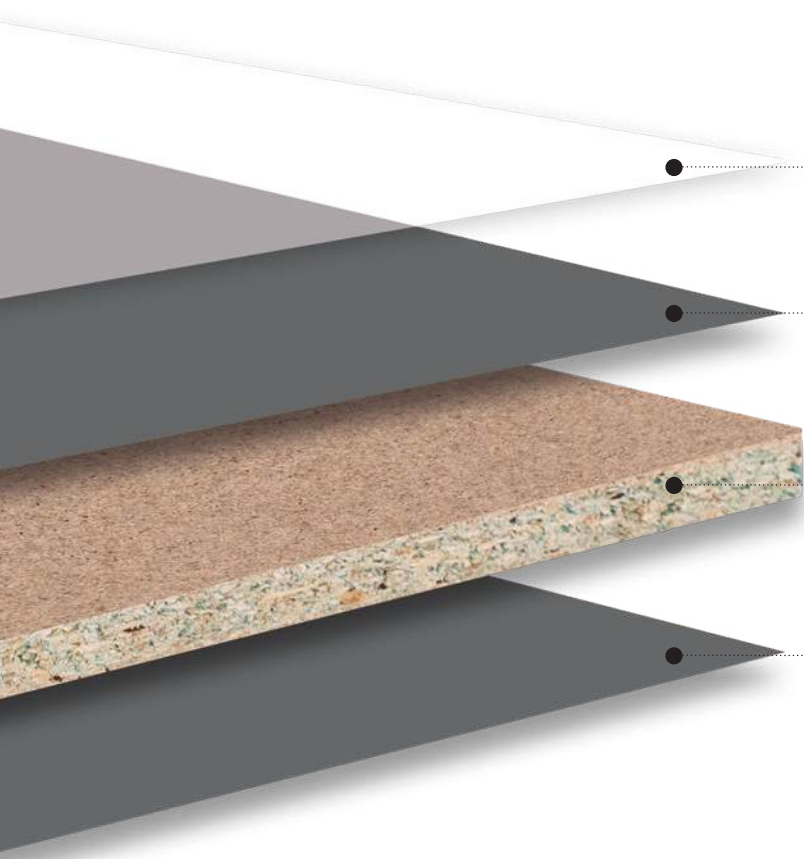


## 易清洁

Easy To Clean

表面涂层结晶更细密  
有效对抗各种污渍  
清洁更省力

Finer crystallization of surface coating  
Effective against all kinds of stains  
Less effort to clean



Nano Excimer Tech Functional Layer  
纳米固化功能层

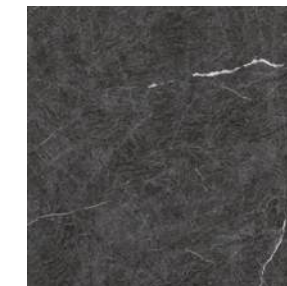
Popular Color Melamine Paper  
流行色高克重装饰纸

F☆☆☆☆ Particle Board

F4 星级环保标准高品质基材

Popular Color Melamine Paper  
流行色高克重装饰纸





CKB122 温德姆灰  
Digital Print Series  
Wyndham Grey



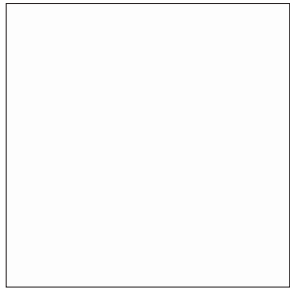
CKB053 高级灰  
Soft Touch Board  
Moon Light

Specifications:  
MDF/Particle board  
1220\*2745\*18mm  
1220\*2745\*22mm

Crystal stone board  
1220\*2440\*6mm  
1220\*2440\*8mm

Applications:  
Furnitures  
Bathroom Cabinets  
Wall





CKB052w 天使白  
Soft Touch Board  
White



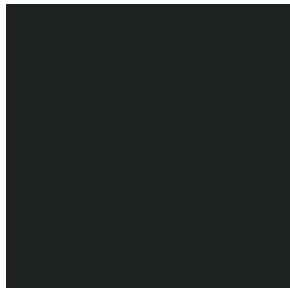
CKB131 朱砂  
Soft Touch Board  
Wine



CKB134 黛蓝  
Soft Touch Board  
Indigo



CKB231 烟灰  
Soft Touch Board  
Smoky Charcoal



CKB265 墨影  
Soft Touch Board  
Black

Specifications:  
MDF/Particle board  
1220\*2745\*18mm  
1220\*2745\*22mm

Crystal stone board  
1220\*2440\*6mm  
1220\*2440\*8mm

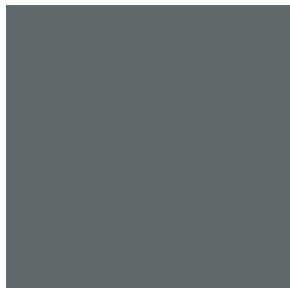
Applications:  
Furnitures  
Bathroom Cabinets  
Wall







C013 库金橡木  
Nature Veneer Board  
Warm Oak



CKB230 天青  
Soft Touch Board  
Celestial Blue

Specifications:  
MDF/Particle board  
1220\*2745\*18mm  
1220\*2745\*22mm

Crystal stone board  
1220\*2440\*6mm  
1220\*2440\*8mm

Applications:  
Furnitures  
Bathroom Cabinets  
Wall







A004 昆布榆木  
Nature Veneer Board  
Coastal Grey Elm



CKB231 烟灰  
Soft Touch Board  
Smoky Charcoal

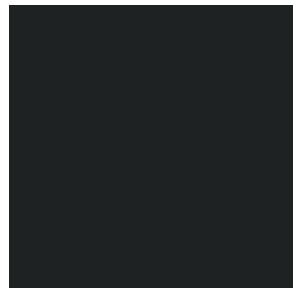
Specifications:  
MDF/Particle board  
1220\*2745\*18mm  
1220\*2745\*22mm

Crystal stone board  
1220\*2440\*6mm  
1220\*2440\*8mm

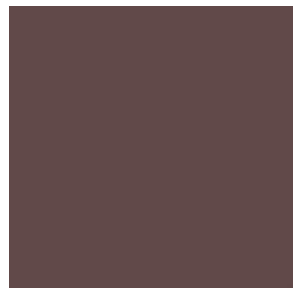
Applications:  
Furnitures  
Bathroom Cabinets  
Wall







CKB265 墨影  
Soft Touch Board  
Black



CKB131 朱砂  
Soft Touch Board  
Wine

Specifications:  
MDF/Particle board  
1220\*2745\*18mm  
1220\*2745\*22mm

Crystal stone board  
1220\*2440\*6mm  
1220\*2440\*8mm

Applications:  
Furnitures  
Bathroom Cabinets  
Wall





# 1200

DPI

超 Retina 级清晰度  
Ultra Retina Reslution

# 1:1

扫描奢石，名贵木材图库  
真实还原 栩栩如生  
Nature Stone, Marble, Wood Textures

# Digital Print Series

## 创意背板系列

金米龙原创图库提供石纹, 木纹, 现代抽象, 装饰复古, 流行时尚等数百款花色, 图案可无缝对花; 多种基材可选。  
更有专业设计师团队, 为您的项目提供全套定制化服务。

Golden Chameleon Original Gallery offers over 500 high-definition patterns to choose, including stone, wood, modern abstract, vintage, etc.  
Our designer team is able to provide professional customized service to your project.





AM011 绿野连天  
Willowherb





A072 流金榆木  
Golden Elm

AM007 钩花细叶蓝  
Blue Leaf Embroidery





AM013 绿野仙踪  
Jade





AM015 流光溢彩  
Radiant Splendor





C068H 霞光胡桃  
Spiced Walnut

GTC025 海纳百川  
Glamour



Walnut



C043H 烟色胡桃  
Maple Walnut



C068H 霞光胡桃  
Spiced Walnut



C070Y 松烟榆木  
Natural Elm



A072Y 流金榆木  
Golden Elm



A001H 烟熏胡桃  
Smoky Walnut



A004Y 昆布榆木  
Coastal Grey Elm



A011Y 墨翠榆木  
Dark Elm



C069H 梅染胡桃  
Sublime Walnut



A071Y 檀褐榆木  
Mocha Elm

Elm

Oak



C013WS 库金橡木  
Warm Oak



A025WS 金盏橡木  
Golden Oak



A045RS 皎玉橡木  
Rustic Oak



A075R 雅青橡木  
Blackened Oak



A065R 茶青橡木  
Black Oak



C073WS 云峰白橡  
Light White Oak



C074W 金盏白橡  
Calm White Oak



A020RS 国墨橡木  
Inked Oak

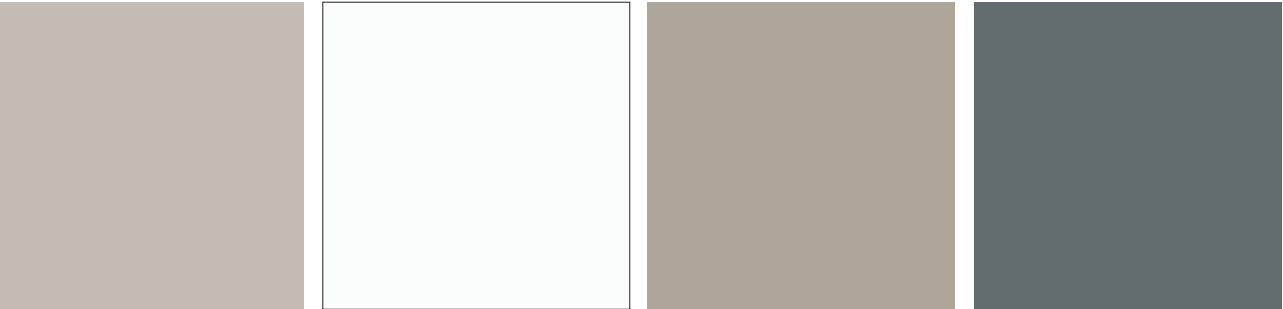


A076R 远山红橡  
Espresso Red Oak



# 欧洲烤漆系列

Soft Touch Series



CKB105 浅灰  
Light Grey

CKB052W 天使白  
White

CKB054 卡其  
Khaki

CKB230 天青  
Celestial Blue



CKB139 冷山白  
Snow White

CKB134 黛蓝  
Indigo

CKB136 雪山灰  
Misty Grey

CKB231 烟灰  
Smoky Charcoal



CKB131 朱砂  
Wine

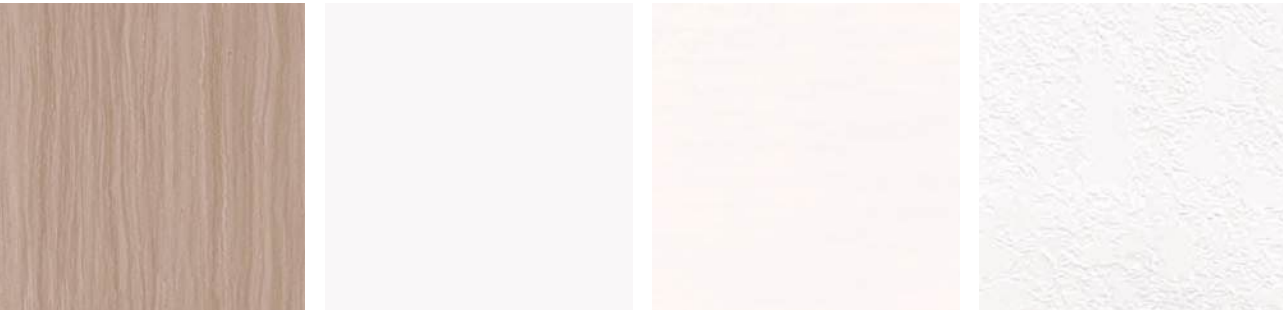
CKB265 墨影  
Black

CKB138 珍珠灰  
Ash grey

CKB053 高级灰  
Moon light

# 极纯 EB 系列

Pure EB Series

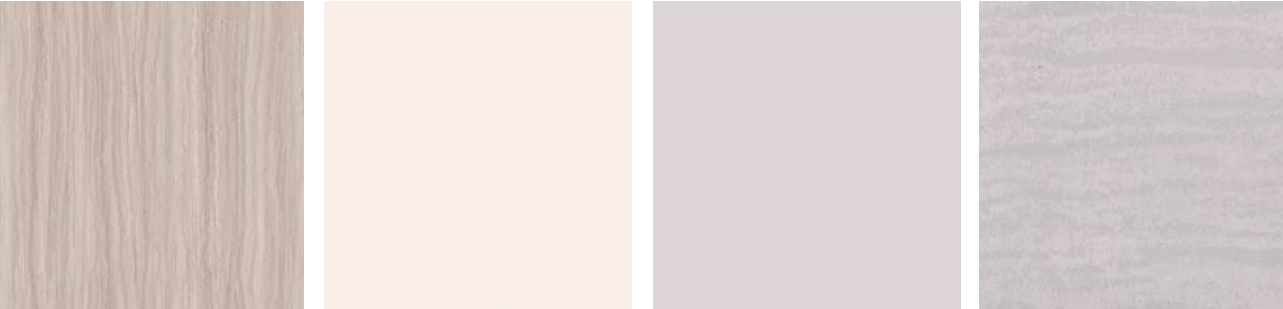


822-238 清风石  
Marble

3100-128 月白  
Snow White

3100-214 月白 - 影木  
Snow White Wood

3100-238 月白 - 陨石  
Snow White Stone

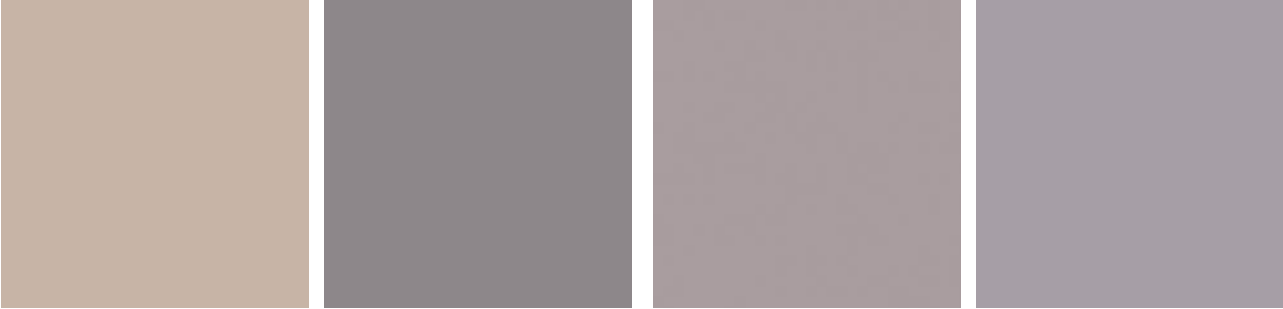


821-238 远山石  
Marble

116-128 藕白  
Cream White

118-128 蜜合  
Summer Beige

118-214 蜜合 - 影木  
Summer Beige Wood



155-128 山南  
Ancient Marble

132-128 轻雾灰  
Light Grey

109-128 明茶褐  
Corduroy Brown

115-128 沉香  
Smoked Latte



124-128 烟罗灰  
Gray Shadow

3099-128 墨染  
Midnight

3099-214 墨染 - 影木  
Midnight Wood

3099-238 墨染 - 陨石  
Midnight Stone



# 创意背板系列

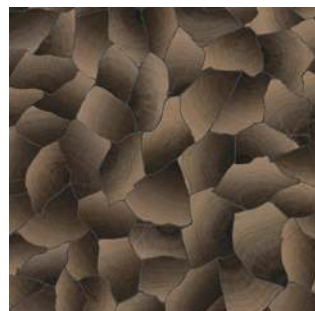
Digital Print Series



AM001 斑马纹灰  
Zebra



AM002 钻石棕  
Diamond



AM003 年轮拼贴棕  
Tree Ring



AM004 迷彩蓝  
Camouflage Blue



AM005 迷彩黄  
Camouflage Yellow



AM006 水墨丹青  
Modern Ink



AM007 钩花细叶蓝  
Blue Leaf Embroidery



AM008 花草黄  
Floral Yellow



AM009 花草灰  
Floral Grey



AM010 热带雨林  
Tropical Rainforest



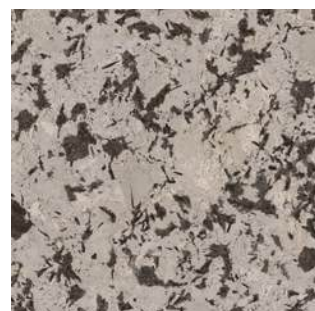
AM011 绿野连天  
Willowherb



AM012 草长莺飞  
Spring



AM013 绿野仙踪  
Jade



AM014 火树银花  
Fireworks



AM015 流光溢彩  
Radiant Splendor



AM016 天山暮雪  
Snow Fall





# 07

## Corporate Vision

### 德国品质 中国制造

金米龙，植根“德国豪迈”制造，其科学、严密的生产管理，成功融合国外先进经验应用于中华本土，树立了数据化、数字化制造新标杆，使“中国制造”品质媲美“德国制造”。

凭借这一卓越体系，金米龙在中国饰面板行业中独树一帜，成为技术创新的引领者，彰显了其深厚实力与前瞻视野。

Golden Chameleon rooted in the manufacturing expertise of "HOMAG Germany," successfully integrates advanced foreign experiences with local Chinese practices through its scientific and rigorous production management. It has set a new benchmark for data-driven and digital manufacturing, making "Made in China" quality comparable to "Made in Germany."

With this exceptional system, Golden Chameleon stands out in the decorative panel industry in China, becoming a leader in technological innovation and demonstrating its profound strength and forward-thinking vision.





# Let the world see Chinese quality and Chinese brands

让世界  
看到中国品质  
看见中国品牌

金米龙，是关健华先生倾注 40 年制造精髓所创立的品牌，承载着他为中國孕育世界级家居品牌的宏伟愿景。

因此，金米龙自创立之初，便以“德国制造”为蓝本，依托先进的加工制造设备，融合创意设计与美学理念，精心雕琢每一种家居空间，细致打造每一块饰面板材，确保创意与生产无缝对接，完美呈现。

从设计到生产，金米龙均遵循世界级企业的严苛标准，精益求精，力求每一细节、每一款饰面产品都能彰显中国品牌的卓越魅力。

Golden Chameleon, a brand founded by Mr. Guan Jianhua with 40 years of manufacturing expertise, carries his grand vision of nurturing a world-class home furnishing brand for China.

Therefore, since its inception, Golden Chameleon has taken "Made in Germany" as the blueprint, relying on advanced processing and manufacturing equipment, integrating creative design and aesthetic concepts, meticulously sculpting every kind of home space, carefully crafting each piece of decorative panels to ensure that the creativity and production of a seamless connection, perfect presentation.

From design to production, Golden Chameleon follows the stringent standards of world-class enterprises and strives for excellence, and strives that every detail and every finish product can show the excellent charm of Chinese brands.









## 金米龙（江苏）科技材料有限公司

Golden Chameleon (Jiangsu) Technology Material Co., Ltd.

江苏省昆山市淀山湖镇北苑路 19 号

N0.19 Beiyuan Road, Dianshanhu Town, Kunshan, Jiangsu

电话 Tel:400-0818-186

网址 Web:[www.chameleon-artec.com](http://www.chameleon-artec.com)